

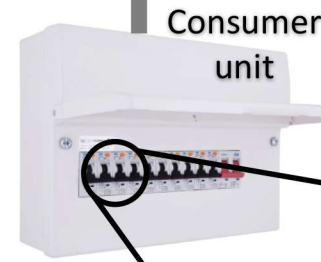
Rotary Isolator Switch



10mm cable (minimum)

ELECTRIC 
COMBI BOILERS CO.

Model: EK.BPL



Dedicated
63A RCD
50A MCB



Hot water

Discharge valve
3 bar (Heating)

Discharge valve
6 bar (Hot water tank)

Filling Loop

Heating Flow

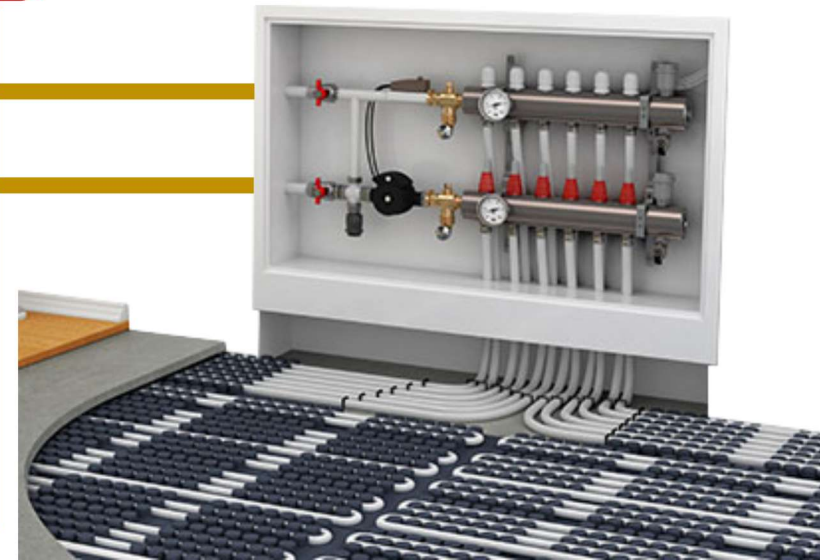
Heating Return

Central Heating

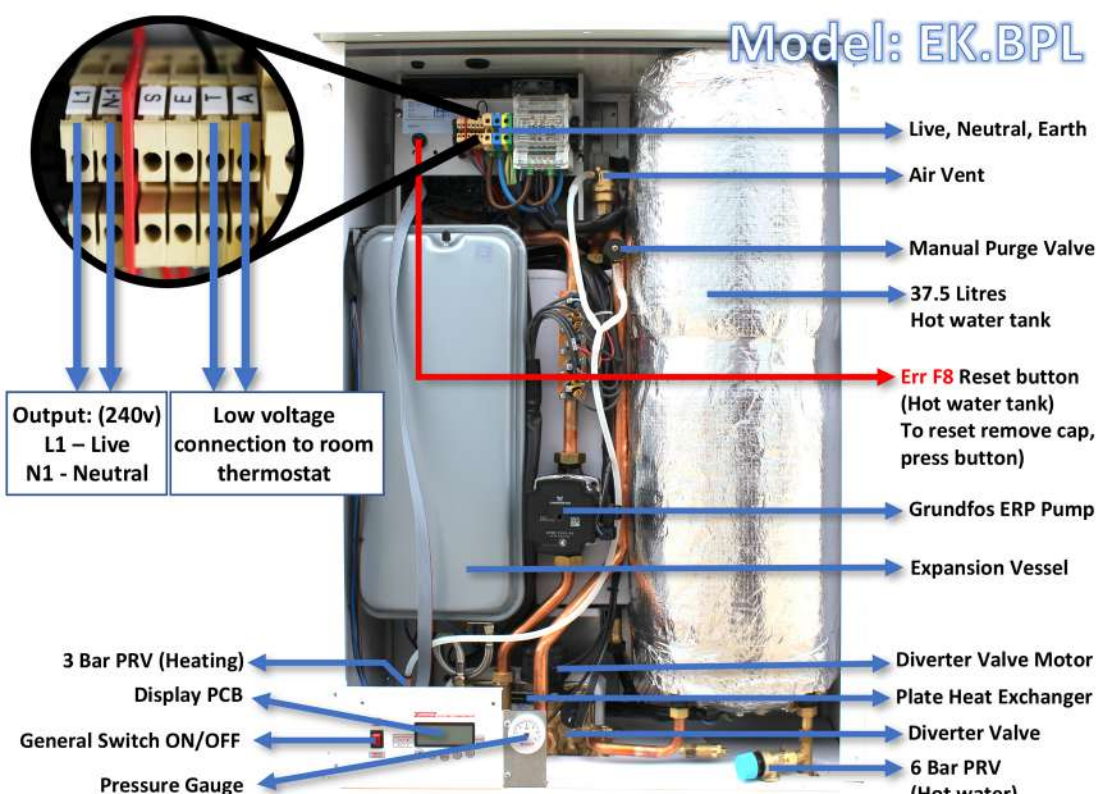
- Radiators
- Underfloor heating



Mains water



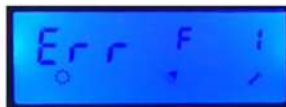
Model: EK.BPL



Installation tips:

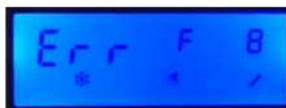
- ✓ Fill the system to 1.0-2.0 Bar pressure with the purge valve open Repeat this process 2-3 times, to let the air out of the system.
- ✓ Now turn the boiler ON without any heating controls connected.
- ✓ Make sure the boiler is on Winter mode for heating demand.
- ✓ Make sure the boiler is on Comfort mode for continuous hot water.
- ✓ After boiler is functioning on Heating & Hot water, connect your room thermostat to connection T and A (low voltage connection only)

Error Codes and Troubleshooting:



Low system pressure

To resolve this open the filling loop and pressurise the system to 1.0-2.0 bar. If the system pressure is 1.0-2.0 bar and the error is there, change low water pressure switch. (Boilers minimum working pressure is 0.8 bar)



Overheat Thermostat protection mode

Press the **ON/OFF** button on display panel to reset the error.



If the error code cannot be reset by pressing the **ON/OFF** button then press the reset button inside the boiler after removing the cap, to clear the code press **ON/OFF** button.



- 2kW per bar (Central heating + Hot water)
- 2kW element for hot water tank
- Hot water temperature (when in use)
- Reset, On/Off, Standby
- Shower head (Comfort mode ON) Hot water

- Boiler On/Off Switch
- Central heating temperature increase
- Central heating temperature decrease
- Change Winter/Summer Mode (Heating)
- Hot water temperature decrease
- Hot water temperature increase

MODE	Press and hold the mode button to switch between WINTER ❄️ and SUMMER ☀️ mode.
+ or - 	Press the buttons to adjust the heating temperature on the boiler.
+ 🚿 or - 🚿	Press the buttons to adjust the hot water temperature on the boiler.
+ 🚿 + - 🚿	Press the buttons together to switch between ECO & COMFORT modes on the hot water.
MODE + ON/OFF	Press the buttons together to start DE-AIR program, this will run for 13 minutes & release air out of the boiler.

General Faults and Troubleshooting:

- ✓ No heating and hot water: Check pump. If stuck, free the impeller.
- ✓ Blank screen: Press and hold **ON/OFF** button.
- ✓ MCB tripping: Make sure the MCB is 50A. Check external wiring including MCB.
- ✓ RCD tripping: This is due to neutral & earth continuity. Check external wiring.

Advisory: Please make sure all connections for 10mm cable are properly tightened. Failure to do so may result in arching/burning. Electrical connections for the contactors and main connector need re-tightening after 12-18 months by an electrician.