

Rotary Isolator Switch

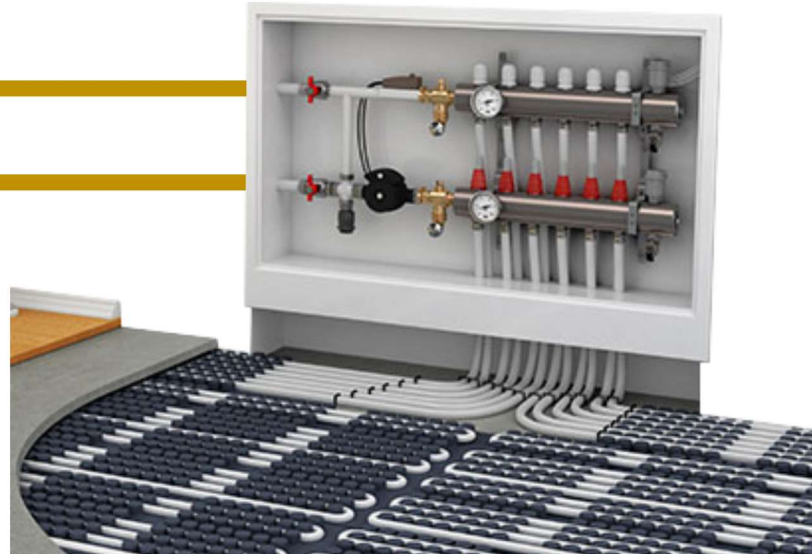
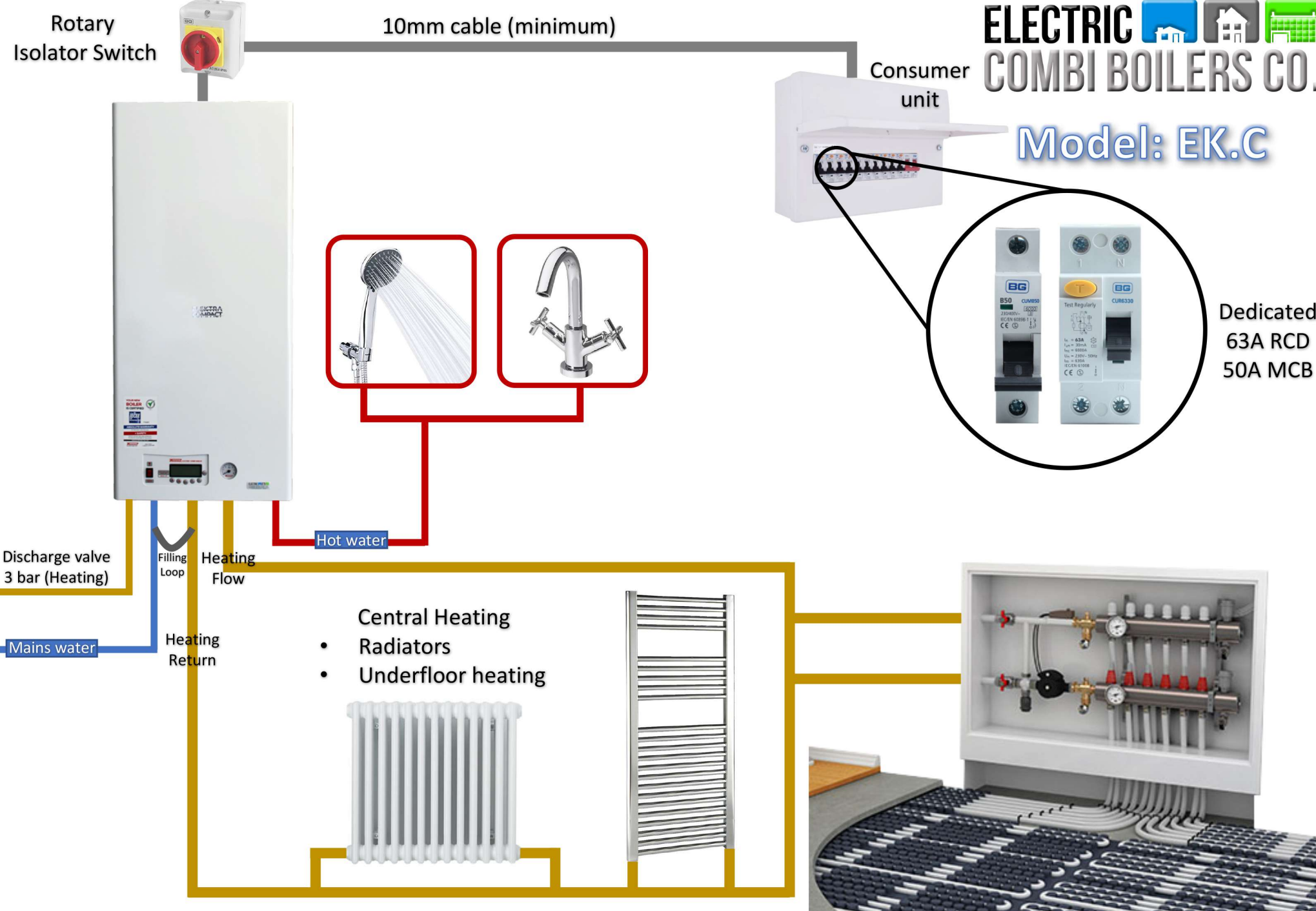
10mm cable (minimum)

ELECTRIC   
COMBI BOILERS CO.

Model: EK.C

Consumer unit

Dedicated
63A RCD
50A MCB



- Central Heating
- Radiators
- Underfloor heating

Discharge valve
3 bar (Heating)

Filling Loop

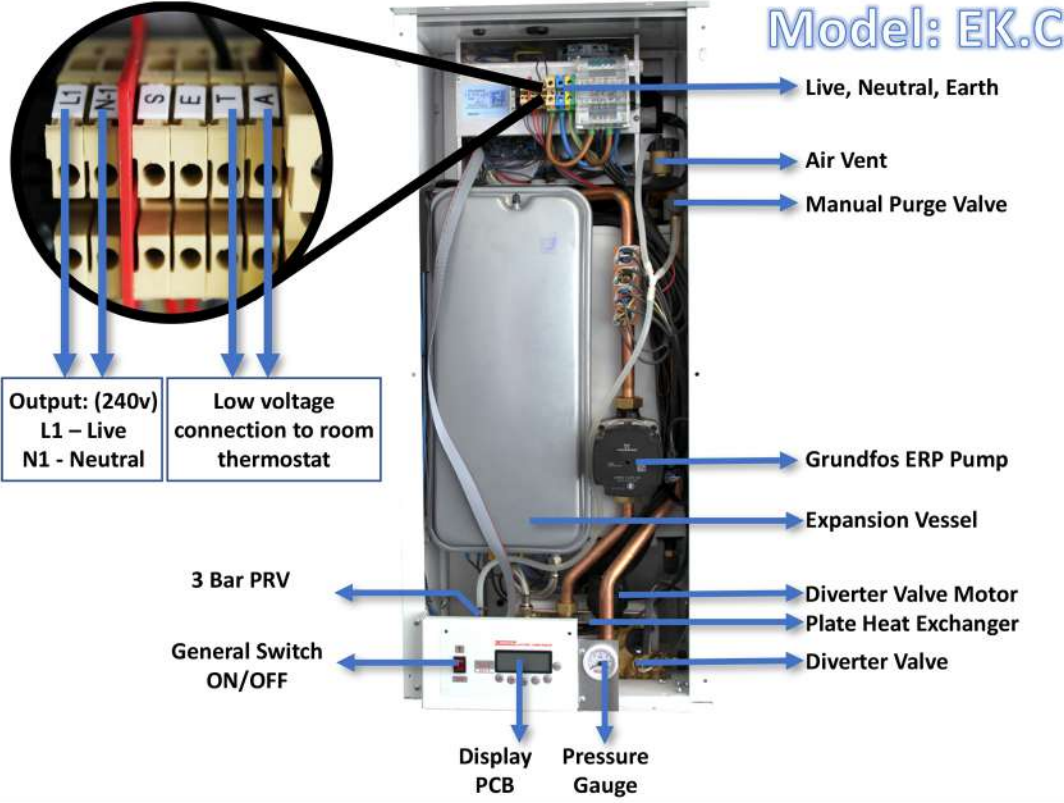
Heating Flow

Hot water

Mains water

Heating Return

Model: EK.C



Installation tips:

- ✓ Fill the system to 1.0-2.0 Bar pressure with the purge valve open. Repeat this process 2-3 times, to let the air out of the system.
- ✓ Now turn the boiler ON without any heating controls connected.
- ✓ Make sure the boiler is on Winter mode for heating demand.
- ✓ Make sure the boiler is on Comfort mode for continuous hot water.
- ✓ After boiler is functioning on Heating & Hot water, connect your room thermostat to connection T and A (low voltage connection only)

Error Codes and Troubleshooting:

Err F 1 **Low system pressure**
 To resolve this open the filling loop and pressurise the system to 1.0-2.0 bar. If the system pressure is 1.0-2.0 bar and the error is there, change low water pressure switch. (Boilers minimum working pressure is 0.8 bar)

Err F 8 **Overheat Thermostat protection mode**
 Press the **ON/OFF** button on display panel to reset the error.

General Faults and Troubleshooting:

- ✓ No heating and hot water: Check pump. If stuck, free the impeller.
- ✓ Blank screen: Press and hold **ON/OFF** button for 3 seconds.
- ✓ MCB tripping: Make sure the MCB is 50A. Check external wiring including MCB.
- ✓ RCD tripping: This is due to neutral & earth continuity. Check external wiring.

Jamma ELECTRIC COMBI BOILER

Control panel features and functions:

- 2kW per bar (Central heating + Hot water)**
- Hot water temperature (when in use)**
- Reset, On/Off, Standby**
- Shower head (Comfort mode ON) Hot water**
- Boiler On/Off Switch**
- Central heating temperature increase**
- Central heating temperature decrease**
- Change Winter/Summer Mode (Heating)**
- Hot water temperature decrease**
- Hot water temperature increase**

MODE	Press and hold the mode button to switch between WINTER ❄️ and SUMMER ☀️ mode.
+ or - 	Press the buttons to adjust the heating temperature on the boiler.
+ 🚿 or - 🚿	Press the buttons to adjust the hot water temperature on the boiler.
+ 🚿 + - 🚿	Press the buttons together to switch between ECO & COMFORT modes on the hot water. (ECO Mode N/A to EK.C)
MODE + ON/OFF	Press the buttons together to start DE-AIR program, this will run for 13 minutes & release air out of the boiler.

Advisory: Please make sure all connections for 10mm cable are properly tightened. Failure to do so may result in arching/burning. Electrical connections for the contactors and main connector need re-tightening after 12-18 months by an electrician.